




Quick Reference Card

Working with Trip Replay

OVERVIEW

A Trip in Fleet Complete is defined as Ignition On to Ignition Off. Trip Replay is a feature that provides you with the route and additional aspects that are involved in a trip. You can access information about the asset's speed and position, readings from sensors, and odometer readings of each position taken during a specific period.

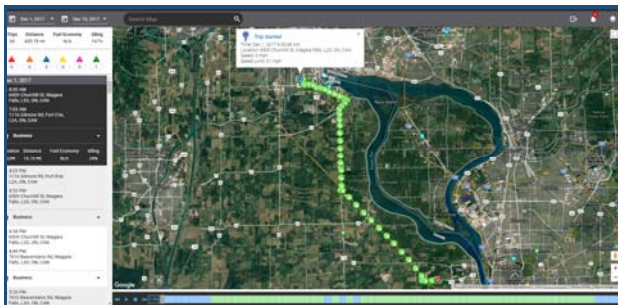
ACCESS TRIP REPLAY

1. Log in to the Fleet Complete
2. From the left-hand side *Map Items Panel*, click an asset's Description for its corresponding information to display in the same *panel*
3. In the Asset Details section, click the **Trip Replay** button  Trip Replay

VIEW THE SCREEN'S LAYOUT

The *Trip Replay* screen is organized into four sections:

1. The **Trip Panel** is located on the left-hand side of the screen
2. The **Map Toolbar** is on the right-hand corner of the screen
3. The **Map Area** constitutes most of the *Trip Replay* screen
4. The **Progress Bar** is in the bottom of the screen



TRACK AN ASSET

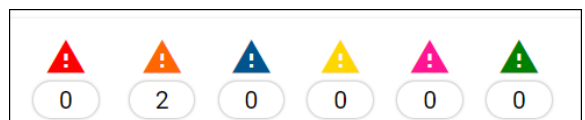
1. Complete steps 1-3 from **Access Trip Replay**
2. Click the first **Calendar** button to select the **Start Date** for the trip
3. Click the second **Calendar** button to select the **End Date** for the trip



4. Below the *Date Range* section, a summary displays of the trips in the replay period for the selected dates including:
 - a. The total number of **Trips**,
 - b. The **Total Distance** travelled
 - c. The **Fuel Economy** based on the fuel tank capacity, and
 - d. The total **Idling** as a percentage

Trips	Distance	Fuel Economy	Idling
9	159.36 mi	N/A	19%

5. Below the *Trip Summary* section, hover your mouse over the different coloured Triangle icons in the the *Rule Violation Summary* to see the total amount of violations that were triggered within the replay period including: Crash detected, Speeding, Harsh Braking, Harsh Cornering, Racing, and Rapid Acceleration



6. Below the Rule Violation Summary is the list of completed trips which are organized by:
 - a. Start Time and End Time of the trip
 - b. Start Address and End Address of the trip, and

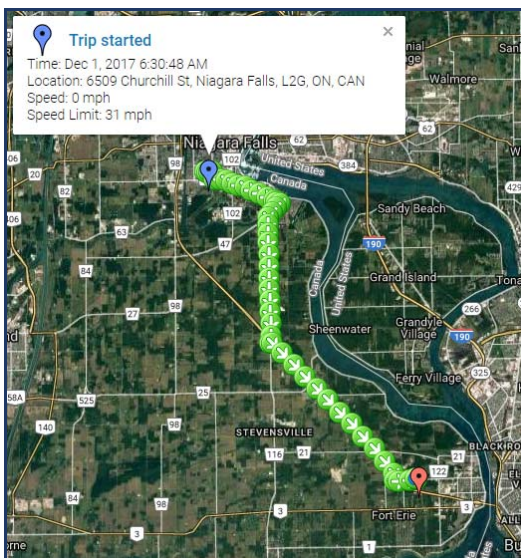


Quick Reference Card

- c. A summary of the trip including the **Duration** for the trip, the **Total Distance** travelled, the **Fuel Economy**, and the **Idling** percentage

Duration	Distance	Fuel Economy	Idling
43m	21.6 mi	N/A	11%

7. Click each completed trip for a visual representation of the trip in the **Map Area** to the right
8. In the Map Area, the **Blue Pin** indicates the starting point of the trip while the **Red Pin** indicates the ending point of the trip. Each position on the map displays the direction in which the asset was travelling at the time the position was taken



9. Hover your mouse over the event on the map to see the details of a violation event, if any, which are represented by their respective colored Triangle Violation icons on the Map area and in the rule violation section of the **Trip Panel**

10. Drag the **Progress Bar** in the bottom to display the different events that took place during the trip



11. The different coloured cells indicate different events throughout the trip, including:
- Blue cells = idling time
 - Green cells = moving time
 - Red indicators = crash detected events
 - Orange indicators = speeding events
 - Dark Blue indicators = harsh braking events
 - Yellow indicators = harsh cornering events
 - Pink indicators = racing events
 - Green indicators = rapid acceleration events

TO LEARN MORE ABOUT TRIP REPLAY

To learn more about Trip Replay, click the **Help** button located in the top right-hand corner of the tracking screen and perform a keyword search.